

Scout Hall Rebuild Monthly Update – January 2017

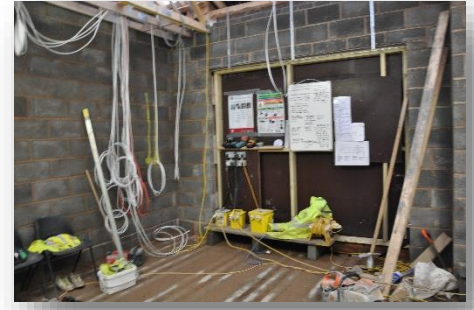
Welcome to the January newsletter to keep you informed on the progress of our Scout HQ Rebuild Project. This update focuses on the Roof and starting the internal fit out.

Parallel Development

What a difference a month makes! If you remember the last update, we had a sneaky peek at the first roof trusses over what will be the garage. This is a very exciting time as you can finally start to see the full outline of the building and imagine it actually being finished!

With most of the external brick and internal blockwork finished, the remainder of the roof trusses at either end of the building were put in place and covered with a membrane to give some sheltered areas for storage (and a sneaky cup of tea).

What you can't see from the outside, is that in parallel with the roof works, the first elements of the internal work is also starting in earnest, at least those bits that aren't affected by the "sun roof" in the middle. There are several miles of cable being laid, socket locations being sited and pipes appearing, to try and ensure we are back in operation as fast as we can be.



Closing Up

Whilst the meeting room, kitchen, toilets and garage have a roof of sorts, the main hall is still open to the elements for a short time.

That doesn't stop the builders working towards a secure and watertight building as you can see from the fitting of temporary doors and the window frames and glass. (The bottom picture is from the inside looking out, if like me you were stuck trying to work it out).

The roof of the main hall will be supported by single span beams that I'm told weigh ¼ tonne each the first of which you may have seen being delivered at the start of February.

Next Month

In February, we expect the following activities to happen;

- Finish the roof beams and tiles – watertight!
- Lay the floor screed & complete the plastering
- Confirm the Handover/opening dates

If you have any questions, or would like to get involved in the re-fitting of the hall, please don't hesitate to contact us at the address below or via the e-mail address rebuild@ladybayscouts.org.uk.

Thanks

This project wouldn't be possible without the help and support of the following organisations and people, and the many donators, contributors and customers to the fundraising events over the last 10+ years;

[Nottinghamshire County Council Supporting Local Communities Fund](#)

[Rushcliffe Borough Council](#)

[WREN Community Action Fund](#)

[Veolia Environmental Trust](#)

Elaine Clarke
Kate Taylor
Peter Shepherd
Richard Mansfield
David Rennie

Steven Thorne
1st Lady Bay Executive Committee
Scouting Leaders
Scouting Parents and Children
All those who've contributed

