

Scout Hall Rebuild Monthly Update – April/May 2017

Welcome to the April newsletter to keep you informed on the progress of our Scout HQ Rebuild Project. This update focuses on finishing the build – Hooray! Nearly there ...

Finishing the Build

This is a longer update than before as it's been some time since the last update – apologies for that, but it's been such a busy & exciting time with the rebuild. Since the building was watertight the internals have moved on at a fantastic speed, overcoming some bumps in the road (or floor) as we go. Externally the



rainwater drainage route was finally agreed and implemented which had been a long running item of worry and the larch finish to the entranceway was installed, and mighty fine it looks too.



Internally, once the plaster was dry enough, with the (new) air-con working overtime to help dry it out, internal electrics were finished, internal doors & dividers were fitted (sometimes twice!) and the painting completed. The

kitchen was fitted with its range-style cooker & endless supply hot water boiler in preparation for community events. Radiators, lights, smoke alarms, emergency lights and switch panels all made an appearance bringing to life the vision of the group and its architect. One last decision, of the many hundreds the groups had to make in the last 9 months, was with the main hall floor – we were very fond of our recycled floor, installed by previous scouting families, but unfortunately the effort of removing it had taken its toll, which linked with having to buy more for the extended hall, and having to refurbish it, meant the best option was a new engineered wood floor. This should be a low maintenance, hard wearing floor with the added benefit of being the same all over – I hope you'll agree it looks, feels and sounds great!

The Last Mile

On April 13th, after some uncertainty, the group were handed the keys and allowed back into the building to start the process of moving back in – a fantastic result, but the start of more hard work by the Committee Members and Scouting Families who had to empty the various stores – a self storage unit, someone's cellar, a couple of garages, some spare rooms – we are very grateful to the owners of our temporary stores who've helped us minimise the costs.





With hindsight, our labelling of the dismantled elements could have been better, but being in scouting we brought our practical skills, teamwork and a bit of creativity to rebuilding the many different shelving sets we've built up over the years. A few (lots!) of tea, coffee, biscuits (& chips!) later and the garage was operational, with the store rooms close behind – Thanks to all those who gave up their bank holiday, and other weekend/evening hours to get this up and running. We really couldn't have done it without you!

There are still smaller commissioning jobs to do, snagging lists to work through, keys to cut, manuals to read, external signs, etc. but we had the first Group meeting in the new hall on the 11th May. It was amazing to see the reaction of the young (& older) people each time they walked into the hall – “it's massive”, “it's brilliant” and “It's too hot” were often quoted, whilst the last one was quickly eliminated under the new air conditioning!

This is what we've done it all for – all those smiling faces – Brilliant – Thank You!!!



Next Month

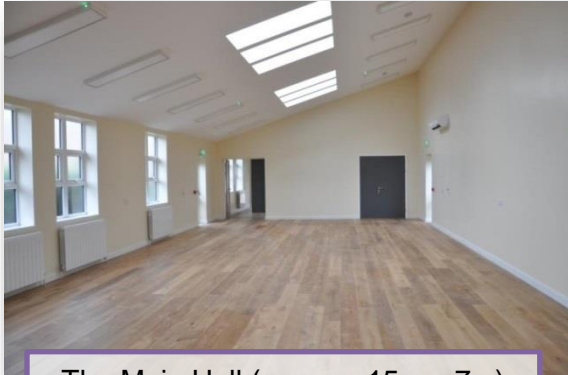
In June, we expect to; complete moving back in and have the grand official opening

- Complete re-filling the equipment/fitting the hall
- Test out our new building with community group hirers
- Have our Grand Opening – you are all invited! (see Website for date)

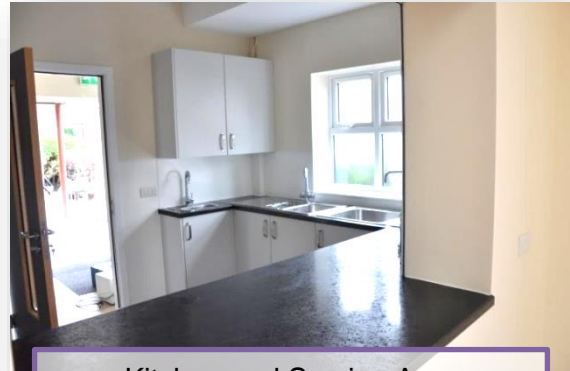
If you have any questions, or would like to get involved in the re-filling of the hall, please don't hesitate to contact us at the address below or via the e-mail address rebuild@ladybayscouts.org.uk.

Hall Hire

If you are interested in Hiring the Hall all the details can be [found on our website](#) & here are some sneaky peeks at the internals, to whet your appetite;



The Main Hall (approx. 15m x 7m)



Kitchen and Serving Area

Highlights;

- Accessible Toilet & access
- Small meeting Room
- Some external Areas
- Tables and Chair Available
- Air Conditioning
- Wi-Fi (Coming Soon)

Whilst the Scout Group have re-built the hall, it is a community resource and the hall hire supports the running costs and maintenance of the building as well as giving a great space in Lady Bay for parties, meetings, exercise clubs, film/book/games clubs, dance classes, craft markets, coffee mornings, and many, many more.

Thanks

This project wouldn't be possible without the help and support of the following organisations and people, and the many donators, contributors and customers to the fundraising events over the last 10+ years;

[Nottinghamshire County Council Supporting Local Communities Fund](#)
[Rushcliffe Borough Council](#)
[WREN Community Action Fund](#)
[Veolia Environmental Trust](#)

Elaine Clarke
Kate Taylor
Peter Shepherd
Richard Mansfield
David Rennie
Steven Thorne

1st Lady Bay Executive Committee
Scouting Leaders
Scouting Parents and Children
6th West Bridgford
[Lady Bay Community Association](#)
And all previous supporters of any events